



# WELCOME!

Summer Hill Apartments is the most desired and affordable community at the heart of Lake Highlands, Texas. Bordered by I-635 and HWY 75, it grants quick access to the cities of Richardson, Garland, and downtown Dallas as well as a myriad of fine dining, shopping, entertainment and Richardson ISD.

This stunning lifestyle hosts a pet-friendly community with large inviting homes, high-end amenities and great apartment features\* that is just 30 minutes from DFW International Airport and so much more!

Once you take a tour and meet our professional and friendly staff, you will be ready to call Summer Hill your home.

## COMMUNITY AMENITIES

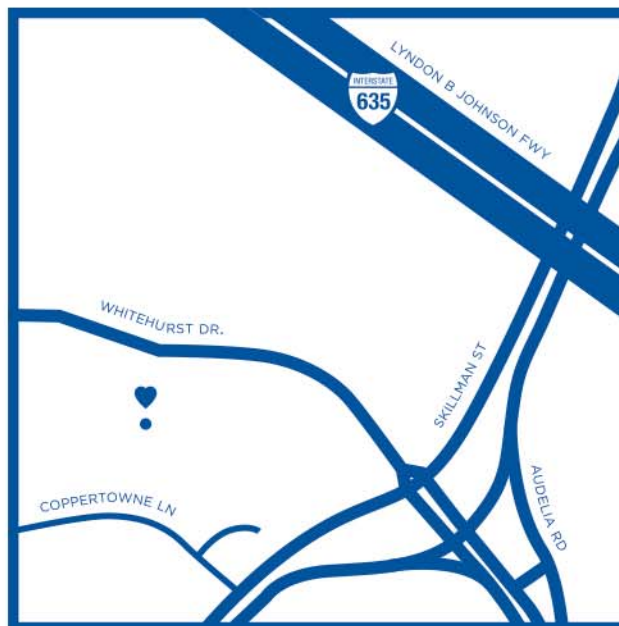
- 30 minutes away from DFW International Airport
- 24-Hour emergency maintenance
- Close to fine dining, great shopping and entertainment venues
- Clubhouse
- Community events
- Courtyard
- Covered parking
- Gated community
- On DART bus route
- On-site laundry facilities
- Pet-friendly community
- Quick access to major thoroughfares
- Resort-style swimming pool

## APARTMENT FEATURES

- 2-inch faux wood blinds
- Accent walls
- Breakfast bars
- Ceiling fans\*
- Kitchen pantries
- Linen closets\*
- Microwaves\*
- Patios/balconies\*
- Separate dining room areas\*
- Spacious walk-in closets
- Vaulted ceilings\*
- Vinyl wood floors
- Washer and dryer connections\*
- Water-saving toilets
- Wood-burning fireplaces\*

ALL SQUARE FOOTAGE IS APPROXIMATE AND IS SUBJECT TO CHANGE. APARTMENT FEATURES MAY VARY BY UNIT. \*ONLY IN SELECT UNITS

A GREAT PLACE TO CALL HOME



**DIRECTIONS:** FROM I-635 TAKE EXIT 16: AUDELIA RD./SKILLMAN ST. IF YOU ARE COMING FROM THE WEST, TURN RIGHT ONTO AUDELIA RD./SKILLMAN ST., THEN TURN RIGHT ONTO WHITEHURST DR. IF YOU ARE COMING FROM THE SOUTHEAST, TURN LEFT ONTO AUDELIA RD./SKILLMAN ST., THEN TURN RIGHT ONTO WHITEHURST DR. WE ARE LOCATED ON THE LEFT.

10010 Whitehurst Drive, Dallas, TX 75243  
TEL (214) 349-7420 | FAX (214) 349-0709

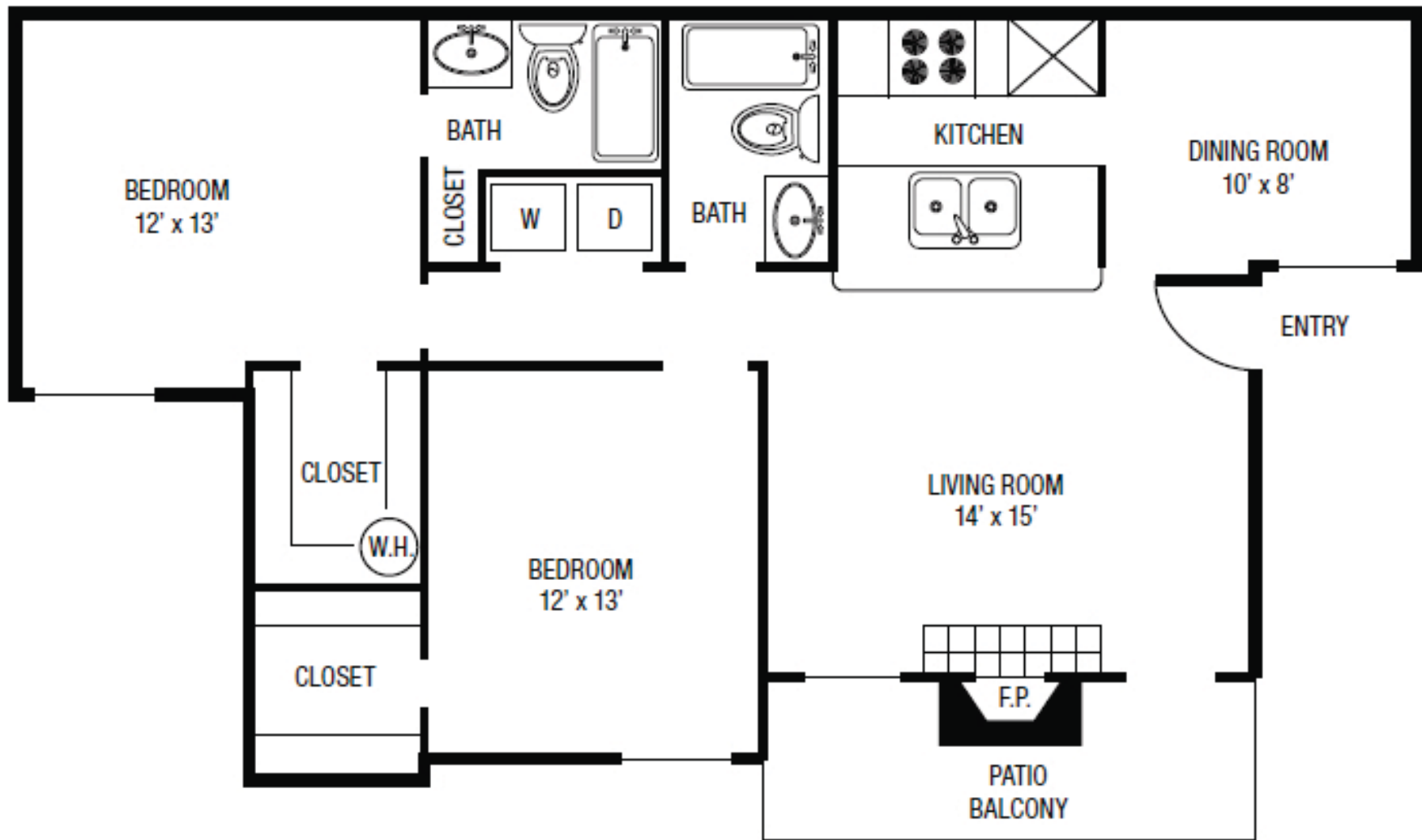
E info.summerhillapartments@wmci.biz

WWW.SUMMERHILLDALLAS.COM



SUMMER HILL APARTMENTS





## Summer Hill B2

Two Bedroom, Two Bath  
970 Square Feet\*

\*All square footage is approximate only